

Owner & Applicant: **XS Realty Holdings, LLC**  
138 Pembroke Terrace  
Glastonbury, CT 06033  
(860) 742-6865

| Date      | Description | No. |
|-----------|-------------|-----|
| Revisions |             |     |

Coventry, CT

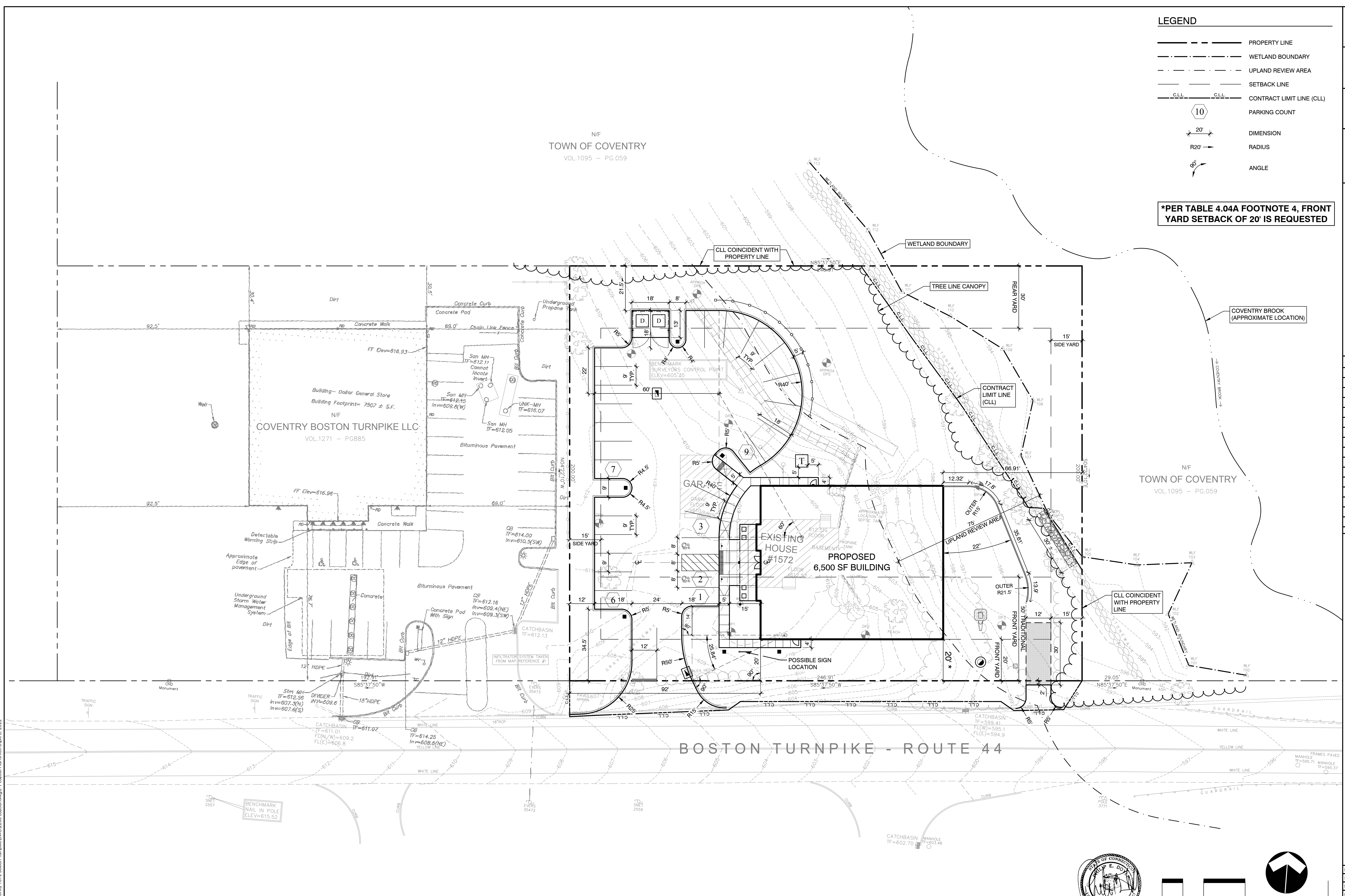
**Layout Plan**  
**Dental Office**  
1572 Boston Turnpike (Route 44)

Project: 2286  
Scale: 1" = 20'  
Date: 04/08/22  
Drawn by: MRS  
Checked by: PED  
Drawing No.

**LEGEND**

- — — — — PROPERTY LINE
- - - - - WETLAND BOUNDARY
- - - - - UPLAND REVIEW AREA
- — — — — SETBACK LINE
- CLL — — — — — CONTRACT LIMIT LINE (CLL)
- 10 (in circle) PARKING COUNT
- 20' (with arrows) DIMENSION
- R20' (with arrow) RADIUS
- 90° (with arc) ANGLE

**\*PER TABLE 4.04A FOOTNOTE 4, FRONT YARD SETBACK OF 20' IS REQUESTED**

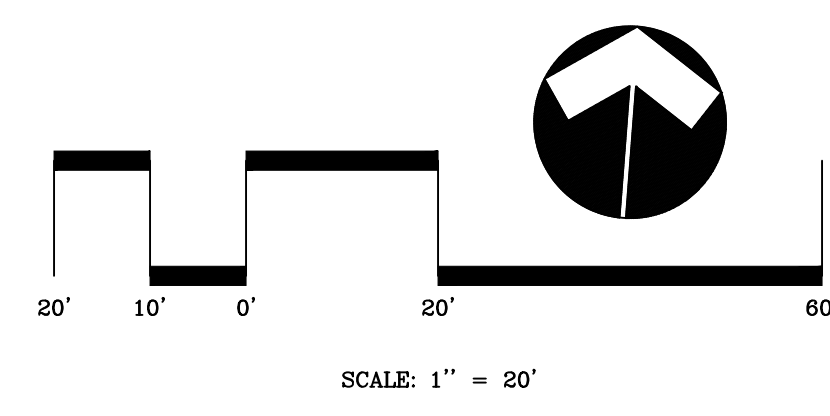
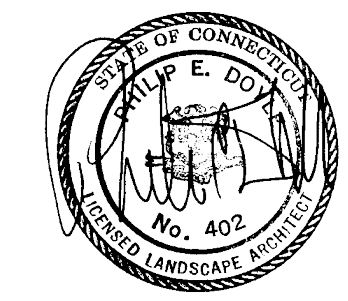


N/F  
TOWN OF COVENTRY  
VOL.1095 - PG.059

N/F  
TOWN OF COVENTRY  
VOL.1095 - PG.059

BOSTON TURNPIKE - ROUTE 44

**PRIOR TO START OF CONSTRUCTION  
CALL 1-800-922-4455 BEFORE YOU DIG!**



C:\T\2286 Coventry 1572 Boston Turnpike\DWG\2286\_Layout.dwg, 04/08/22