

To: Melinda Gosselin, IWA and Erosion Control Officer

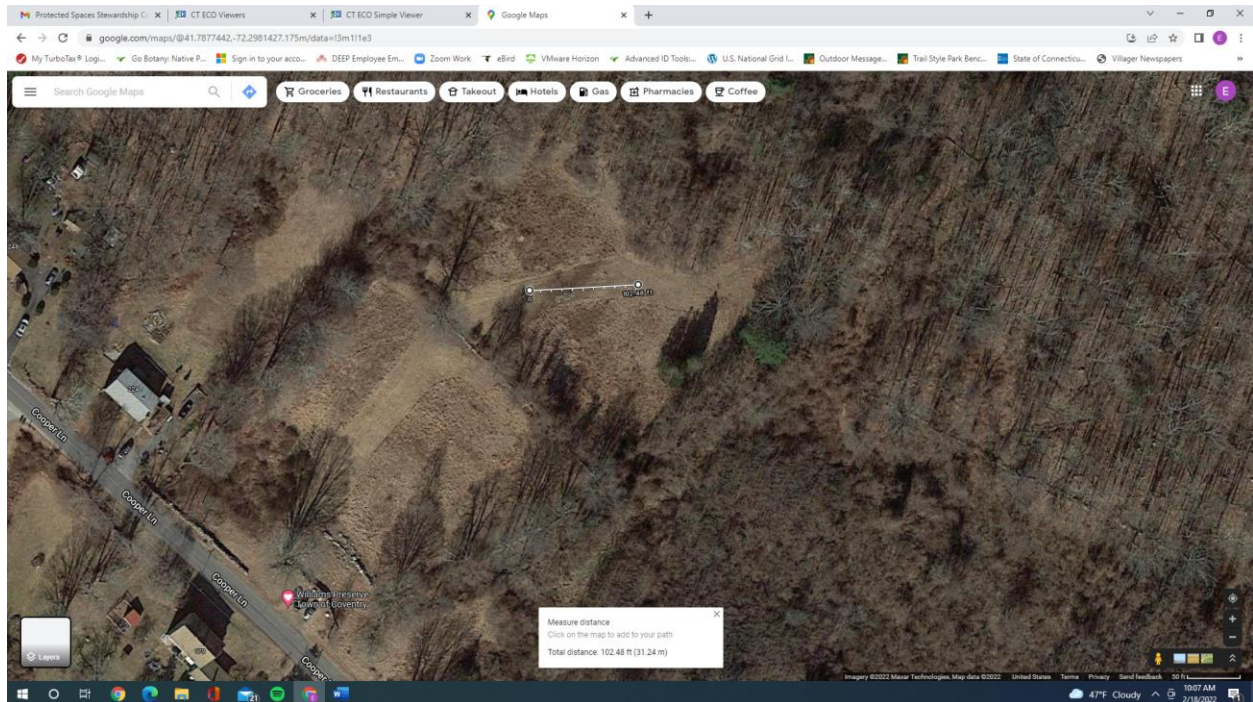
From: Eric Thomas, Protected Spaces Stewardship Subcommittee

*EDT*

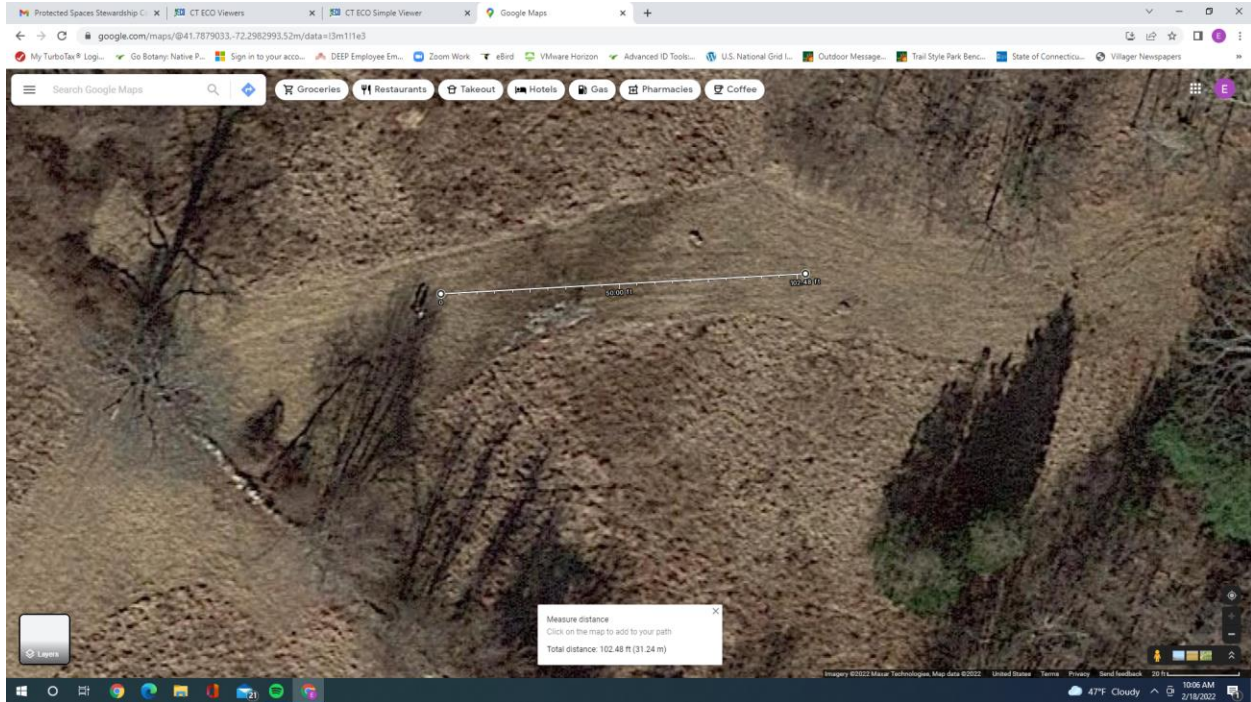
Date: February 18, 2022

RE: Proposal for Low Elevation Boardwalk Crossing, Williams Preserve

Here is a quick map overview of the proposed project site:



The pedestrian user “Bog Bridge” design consists of (8x) 12 foot-long sections of (3x) 4” x 6” GC tread boards in parallel (w/ 1” gap) screwed to (3x) 6” x 6” x 3 foot-long CG base boards. Sections to be fixed to ground with 0.5” diameter, 1 ft-long #4 rebar pounded to flush level through 2-4 corners of each section. There will be a 1 foot-long horizontal separation gap between each section. This will be a total length of ~ 103 feet. Board walk can be fully disassembled and relocated if needed. No motorized vehicles or power equipment will be used on site for this project. Area had been subject to annual mowing by Coventry Public Works staff and seasonally by trained volunteer with ride-on mower for 8’ grassed trail path.



Here is the proposed 8-foot long layout:

